



Project SEARCH

**Achieving Meaningful Employment for People
with Intellectual and Developmental Disabilities**

Program Philosophy

People with disabilities have the right to choose a path toward education and employment. However, while freedom of choice is given, the right to work is earned. Earning the right to work is dependent upon the student's preparation.

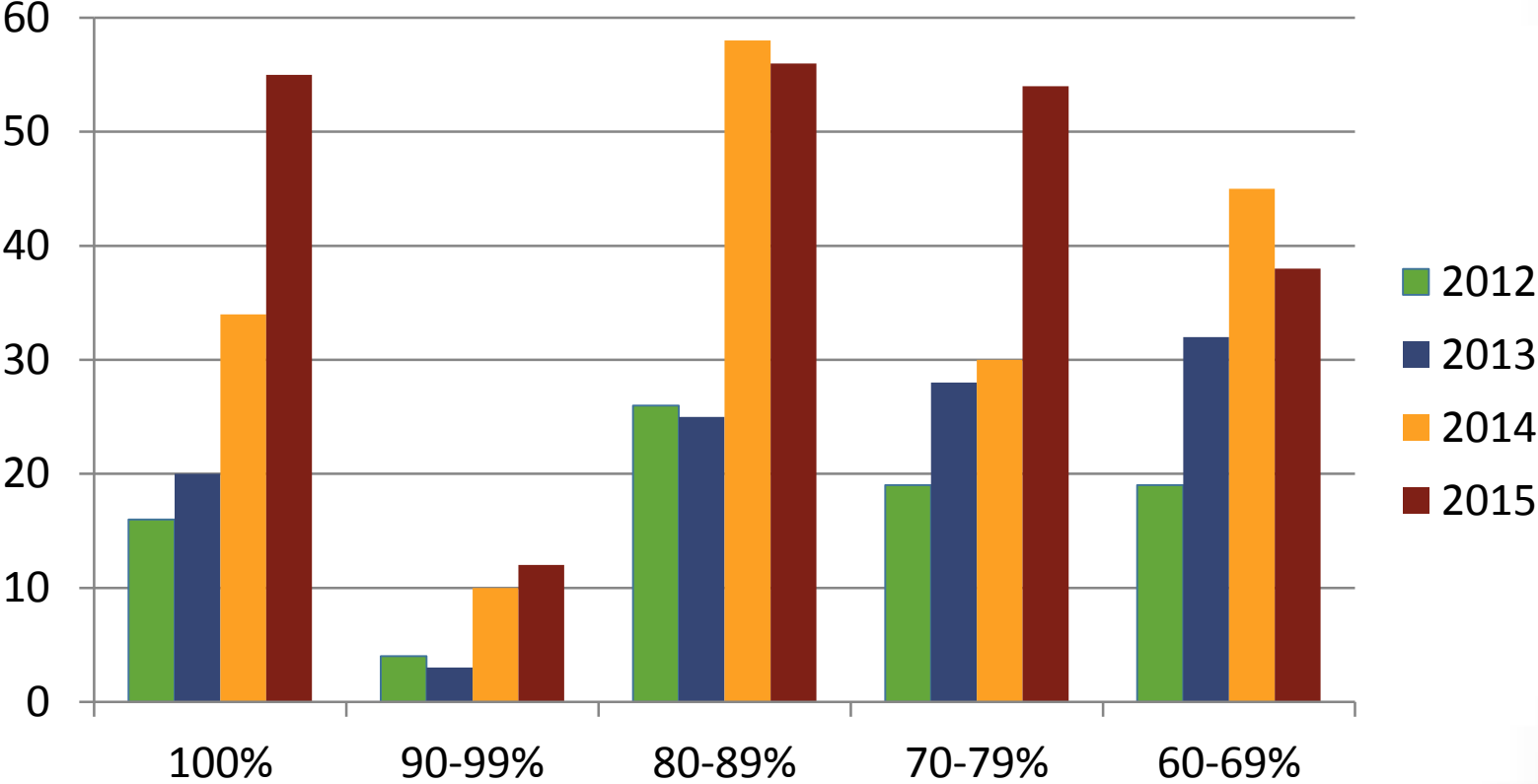


Stephen Simon, ADA Quarterly, Fall 1998

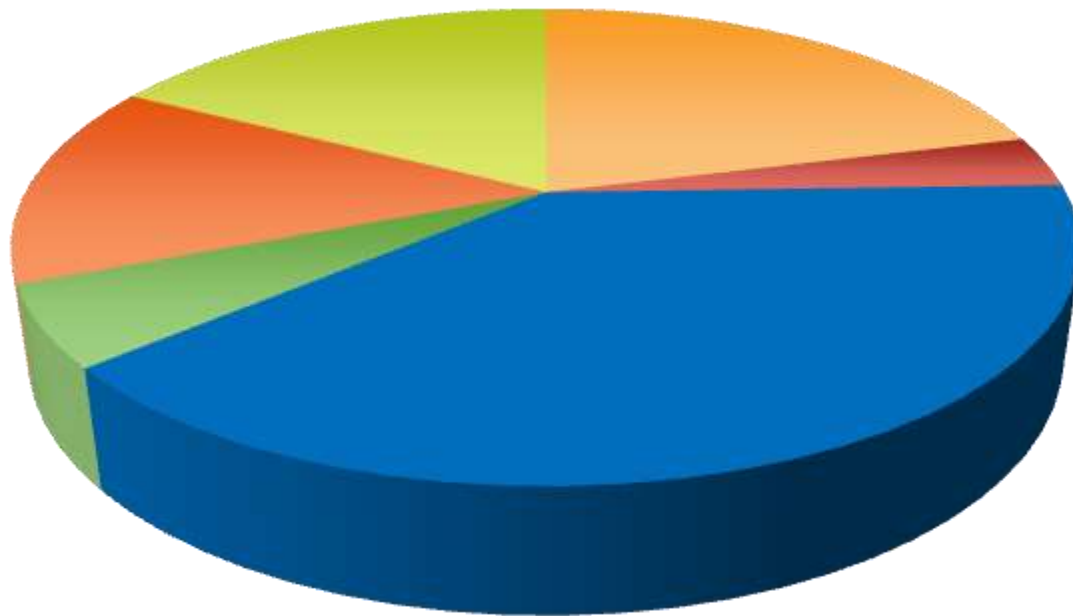
- Over **500** programs in **45** states, Canada, England, Ireland, Scotland, Wales, Holland, Bahrain, Australia and Portugal.
- **94%** of sites entered data
- **75.5%*** of graduates employed
- **33%** employed by the host site, **67%** employed elsewhere in the community
- Average hourly wage was **\$9.61**
- Average hours worked were **25.4/week**

*Adjusted for missing data (Markov Chain Monte Carlo Multiple Imputation)

Comparison of Outcome Data

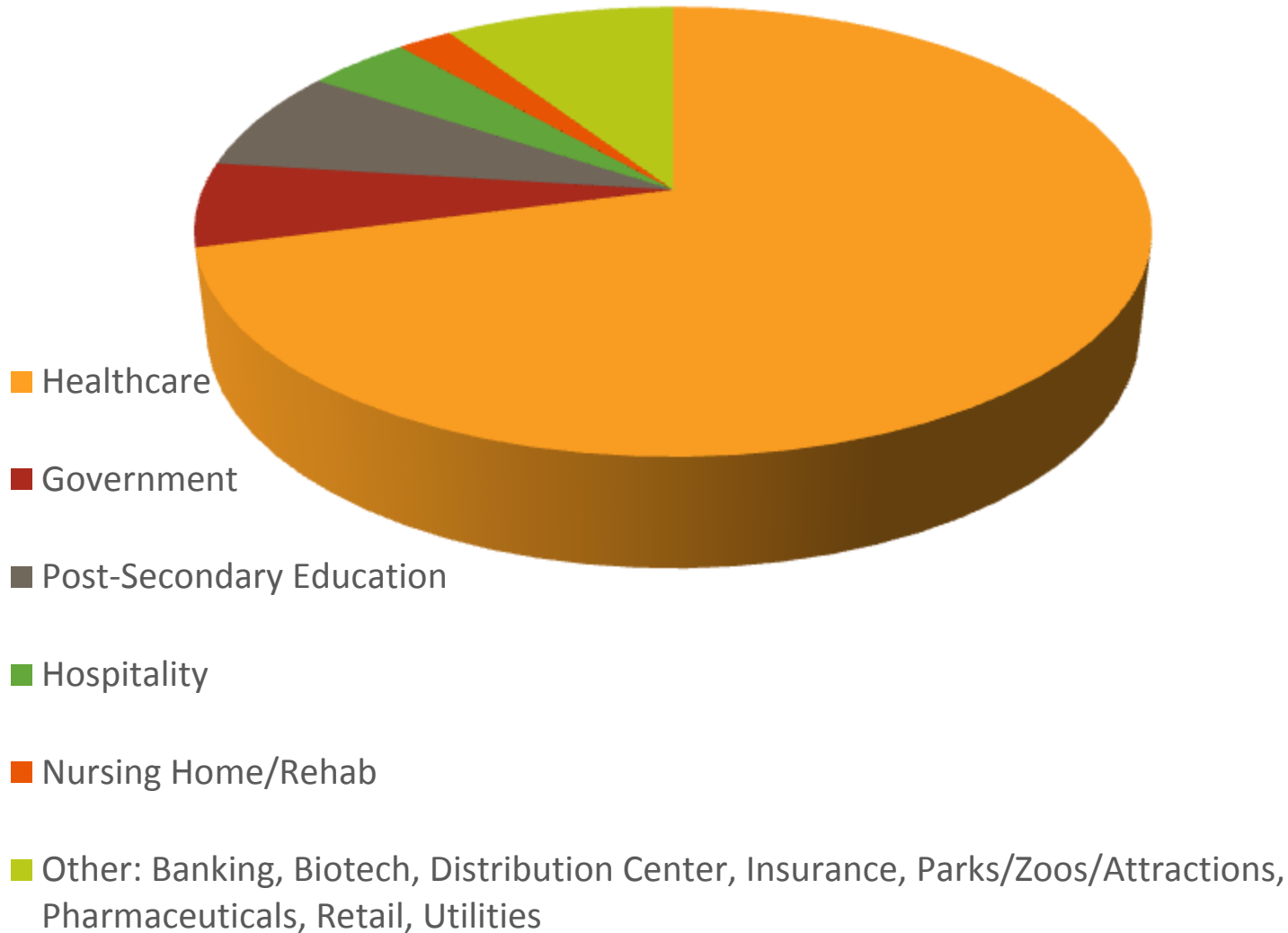


Class of 2014-15 Disability Categories



- Autism
- Emotional Disturbance
- Intellectual Disability
- Multiple Disabilities
- Specific Learning Disability
- Other

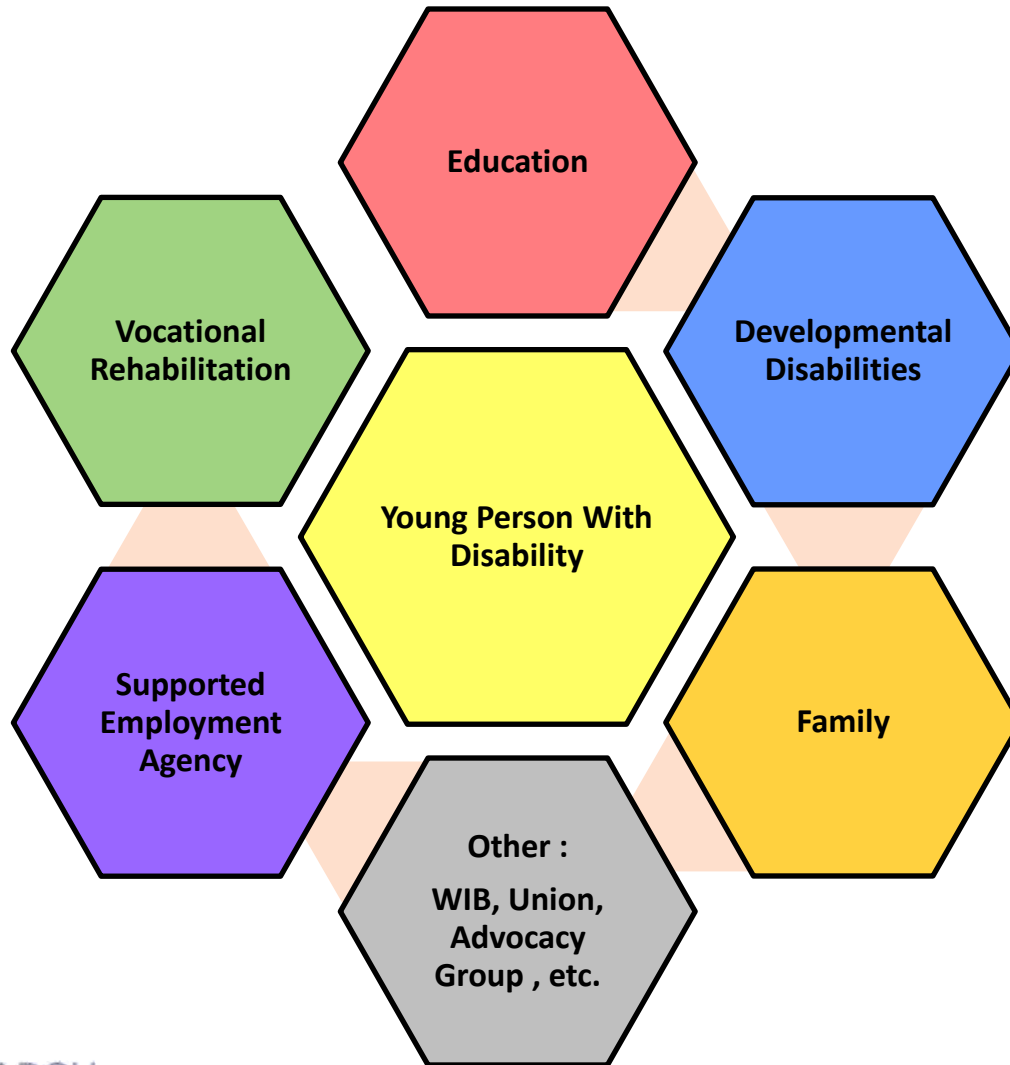
Host Business Industry Sectors



Definition of Competitive Employment

- At least **16 hours per week**
- Pays the **prevailing wage**
- **Non-seasonal**
- In an **integrated setting** (i.e. among co-workers with and without disabilities)

Project SEARCH Partners





The business provides:

- Business liaison
- Internships
- Classroom



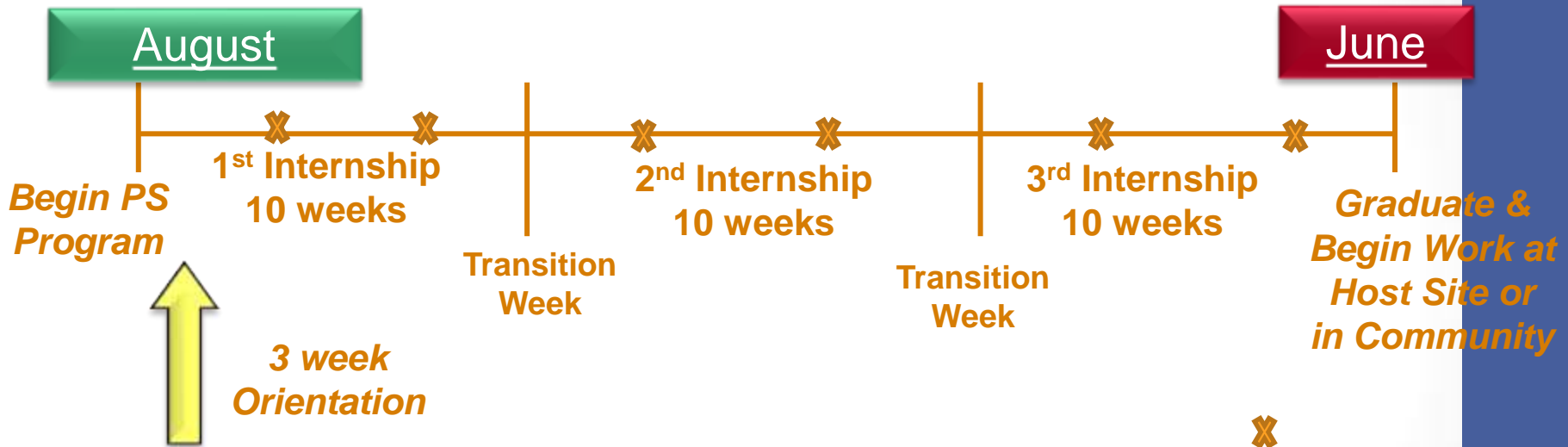
Program Description

- One academic year – 9 months
- 10-12 individuals with a variety of intellectual and developmental disabilities
- Instructor and skills trainers
- Immersed in host business culture
- Rotations through unpaid internships with continual feedback
- Outcome of employment in the community

Program Description-Eligibility Criteria

- Eligible for services
- Appropriate hygiene, social, and communication skills
- Ability to take direction and change behavior
- Access public transportation
- Pass drug screen, background check
- Desire to Work!

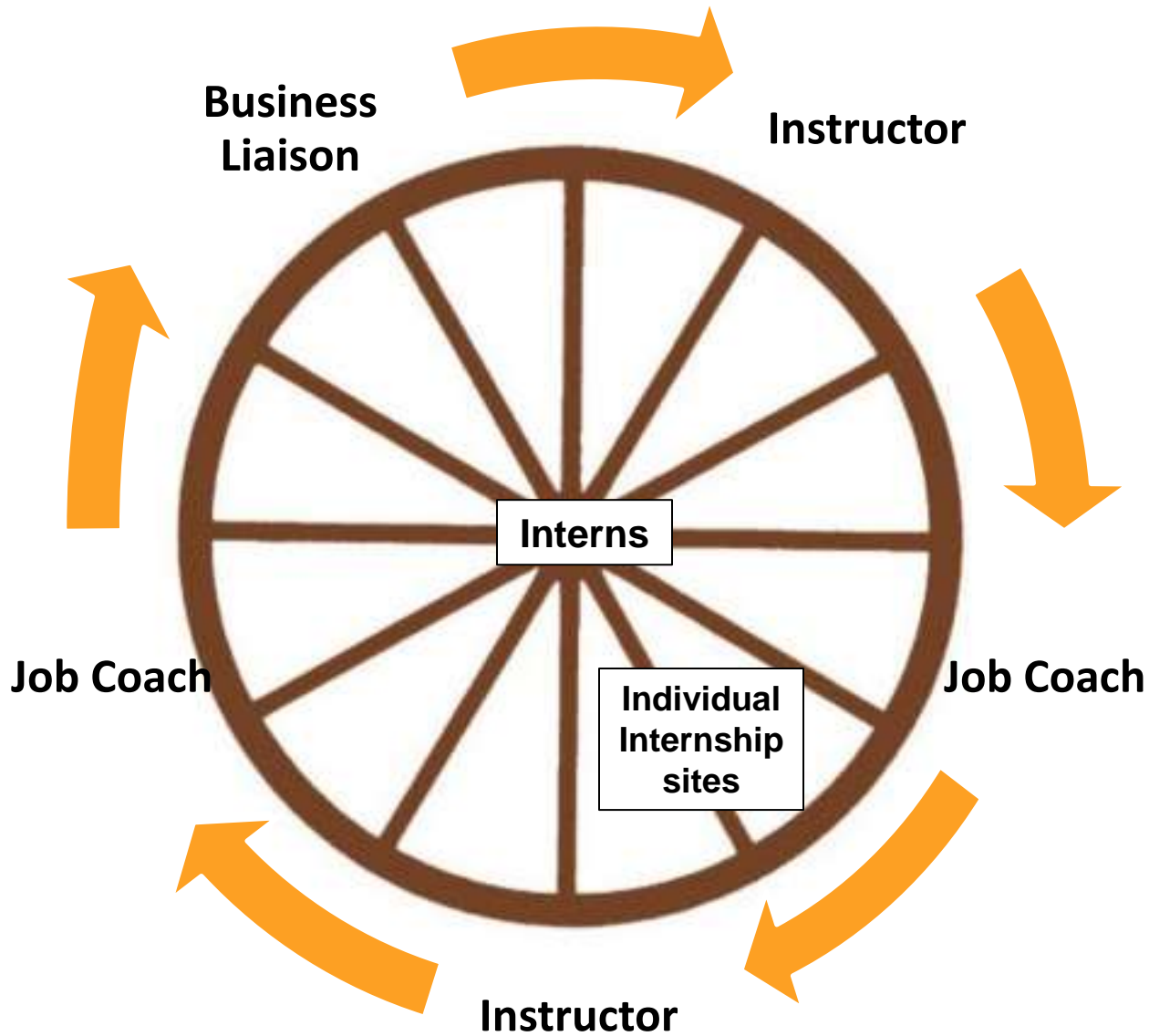
Project SEARCH Calendar



A Day in the life of a Project SEARCH Student

- 8:00 Employability Skills
- 9:00 Internship site
- 11:30 Lunch
- 12:15 Internship site
- 2:00 Review, Plan, Journaling
- 2:30 Depart



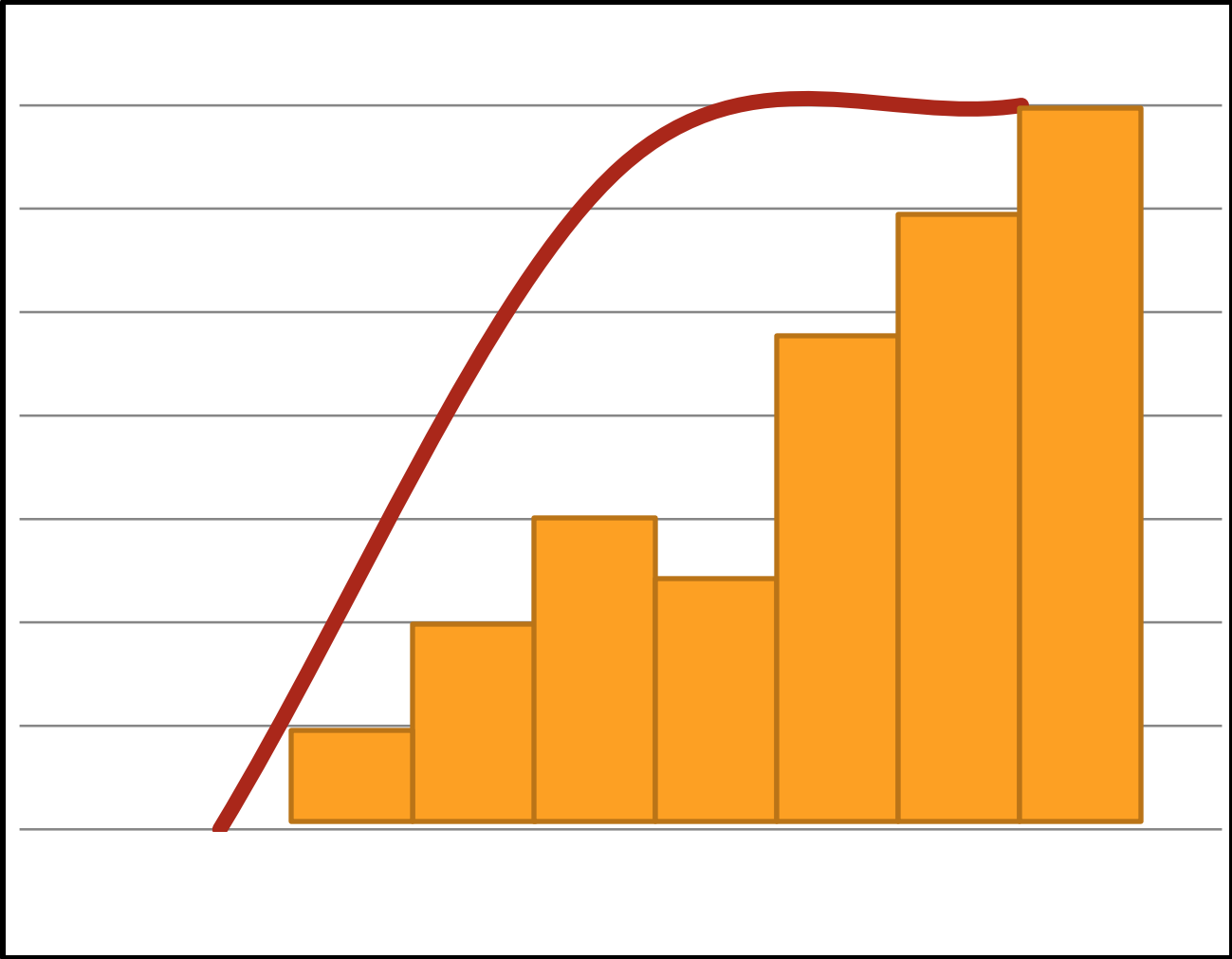


Internships



- Marketable Skills
- 4 – 5 hours of day, 910 per year
- Work/ Social Skills
- Integrated
- Cascading skills
- For the benefit of the student, not the benefit of the host employer

Same Destination, Different Journey



All tasks
during
orientation
and
probation

Transporter

Retrieve
and clean
stretchers

Maintain
Changing
Area

Check
oxygen
tanks

Maintain
waiting
area

Deliver
contrast
Transport
patients

Transporter

First
internship

Second
Internship

Third
Internship

Nontraditional Jobs

**Not the “Easiest Jobs”
But
“Complex and Systematic”**

Accommodations/Adaptations/Supports



